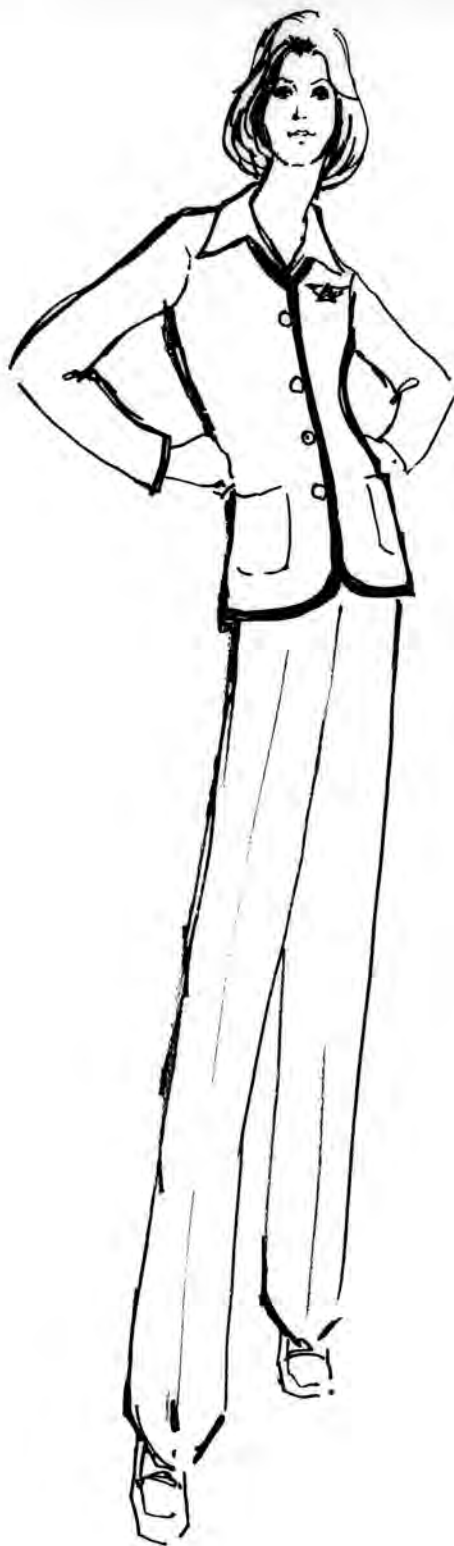


DELTA Stewardess Collection

by

Fashionaire

HART SCHAFFNER & MARX • CHICAGO



JACKET

The jacket, available in navy bound in bright red, or red trimmed in navy, is cut simply as a cardigan in a length long enough to cover the shrink and the hip area. This jacket has been designed to fit smoothly (never tightly) through the bust and midriff area, and it is important that the shoulders fit properly. The jacket sleeve should end at the wristbone. The edge of the jacket should not pull across the hip area. This classic cardigan style fully-lined jacket has been given a touch of brightness with its row of brass buttons, and it may be worn open or closed. The stewardess wings are to be worn on the left side of the jacket approximately 5 or 6" down from the shoulder seam.

Regulations on Wear of the Jacket:

The jacket or shrink must be worn at all times—with one exception. It can be removed during serving when wearing the in-flight serving smock.

Regulation on Match of Colors:

If the jacket and shrink are worn at the same time they must be of the same color. The Delta stewardess may not wear a jacket and shrink of the opposite color.

Care of Jacket:

The fabric is 100% polyester double knit. Before washing, turn the jacket inside out and button. Then just hand or machine wash on warm (gentle) setting with mild soap. **WASH DARK COLORS SEPARATELY.**

To drip dry—roll garment in a towel and hang to drip dry on a smooth wooden, plastic or other non-metallic hanger.

To machine dry—tumble dry on low setting and remove promptly when dryer stops.

This garment should never need ironing, but if a touch up is desired, a cool iron should be used.

In lieu of washing, these garments may also be dry cleaned.



SHRINK

The newest accessories for color continuity, color contrast, or extra warmth are the U-neck sleeveless shrinks. They are unlined for quick drying and feature a handy center back zipper. Choose navy trimmed in red, or red with navy binding, but remember to wear the same color shrink with the same color jacket. Contrasting color skirt or pants may be worn. The shrink must be worn when not wearing the jacket or serving apron. The Delta stewardess wings are worn at the center front below the contrasting band.

CARE: Same as for jacket except that the shrink need not be turned inside out before washing.

SKIRT

The Delta stewardess skirt is a comfortable A-line in solid red or navy with a side zipper closure. We've omitted the waistband for comfort and a smooth fit under the jacket and shrink. These skirts have been fully lined with a coordinated polyester lining for comfort and shape retention. They should fit comfortably (not tightly) around the natural waistline and should not pull around the stomach or across or under the hips. The length should be 2-4" above the crease at the back of the knee.

CARE: The fabric is 100% polyester doubleknit and the care is the same as for the jacket, except that the skirt need not be turned inside out before washing.



SWEATER

This rib knit style, that has become a classic, features short set-in sleeves and a center back zipper. The small mock turtle neckline is comfortable and should not present a "makeup problem". The sweater should be worn outside the skirt or pants with the jacket when the shrink is not being worn.

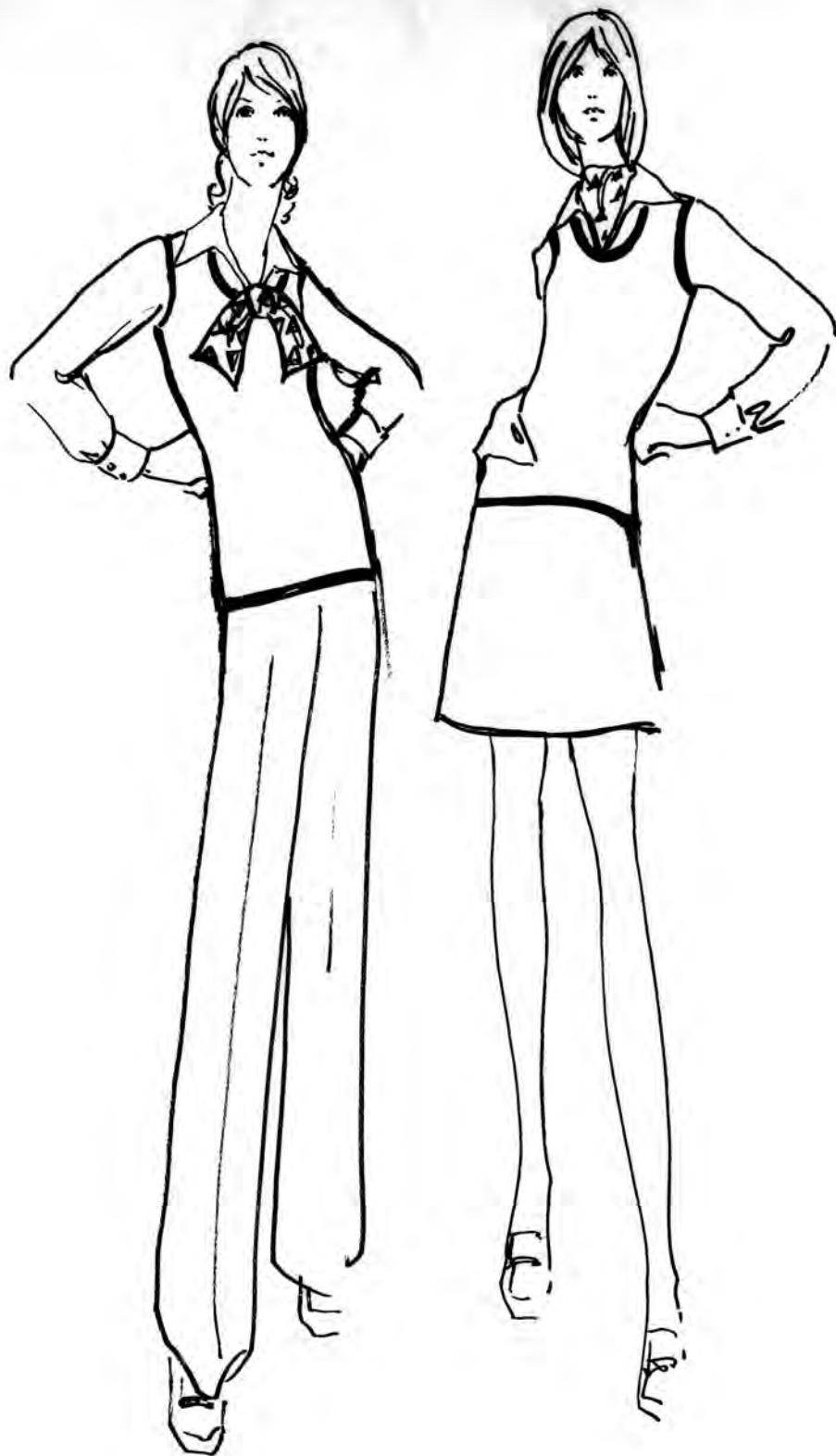
CARE: 100% acrylic fiber. Hand or machine wash in warm water and mild soap. Do not use chlorine bleach — rinse well. Tumble dry at low or medium setting. Remove immediately when dryer has stopped and fold or hang on smooth hanger.

If not using a dryer, remove from washer before spin cycle, smooth out wrinkles, and dry on a smooth wooden, plastic, or other non-metallic hanger.

PANTS

A new look in pants are the ones you will be wearing. They have straight legs with a slight flare at the ankle. They should fit smooth (not tight) over the hip area and the pants leg should also have a smooth (not tight and not baggy) look. They are unlined for quick drying and feature the new slightly higher waistband and side zipper closure. The length of these pants should be 1" from the floor in back tapering upward to the tongue of the shoe.

CARE: The fabric is 100% polyester doubleknit and the care is the same as for the jacket, except that the pants need not be turned inside out before washing.

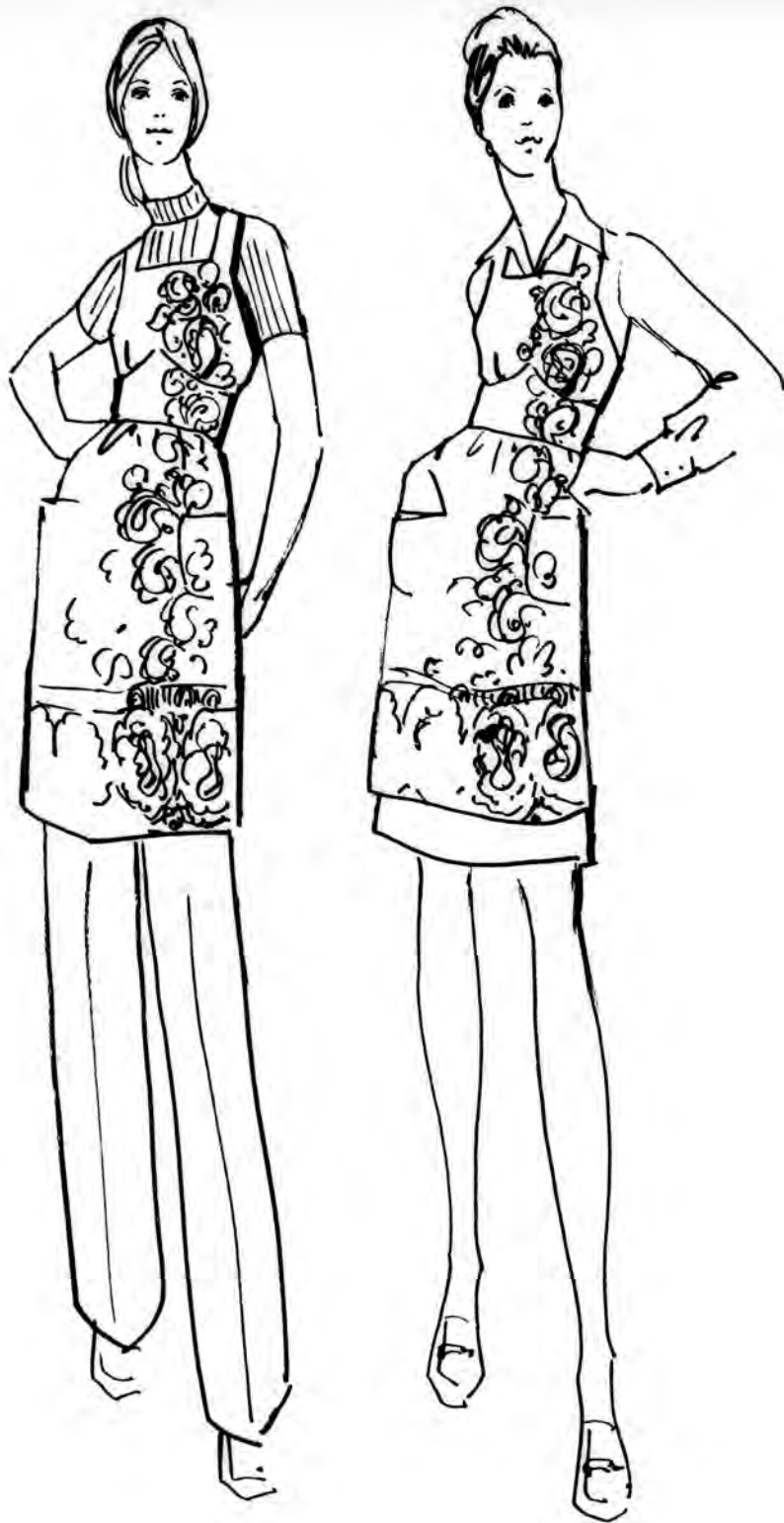


BODYSHIRT

One of the shirt's most delightful variations is this one in crisp, clean white. It features an open shirt collar, long sleeves, button front, and cuffs. But best of all, it will give a smooth line under the shrinks and stay put during the active life of a stewardess. We've added an adjustable stretch lace bikini for comfort and easy wearing. Further adjustment is achieved in our two lengths Regular or Tall.

CARE: The fabric is 100% polyester in a silk-like texture. Machine wash in warm water at Wash and Wear or Permanent Press setting. Do not use Chlorine bleach. Tumble dry at low or medium setting. Remove immediately when dryer stops. If not using a dryer, remove garments from washer before spin cycle, smooth out wrinkles, and drip dry on smooth wooden, plastic or other non-metallic hanger. To hand wash, use lukewarm water and rinse well. Do not wring or twist. Smooth out wrinkles and roll in a towel to remove excess moisture. Put on hangers as above.

Special Notes: If it is necessary to use hot water for heavily soiled garments, follow the rinse temperature instructions on washer. If excess static is encountered when removing garment from dryer, the use of a fabric softener in the final wash-rinse cycle will help to minimize this condition. If ironing is needed, iron on the wrong side and use a setting no higher than silk.



SERVING APRON

For inflight service, the Delta stewardess wears a paisley serving apron featuring a gathered bodice, fitted waistline, and gathered skirt with two patch pockets. This apron is available in small, medium and large. The fit is achieved with the adjustable strap at the neckline and the ties at the waistline. The Delta stewardess may secure her apron with a bow in the back, or the ends may be brought around and tied in front (square knot). This apron is a border print paisley design with no hem. Therefore, it cannot be lengthened or shortened at the hemline.

CARE: Hand or machine wash in lukewarm water with mild soap. Drip dry as jacket or tumble dry on low setting. Since the fabric is cotton/polyester, this apron should never need ironing. If a touch up is needed, use a warm iron (and possibly some spray starch). Spots can be taken out with warm water and a little mild soap. (This will work better than cleaning fluid because this garment has been treated with a zepel finish for spot stain resistance and water repellency.)



ALL WEATHER COAT

Meeting passengers or the weather will be a breeze for the Delta stewardess in her new all weather coat. Designed in cloud grey, the newest color in rainwear, it features a large notched collar, bright silver buttons and pockets in the side seams. This coat has been tapered at the sides to eliminate bulk and is belted at the natural waistline. It comes with a warm pile zip-in/out liner, and has been treated with a water repellent and spot/stain resistant finish.

This coat should be worn buttoned and belted at all times.

CARE OF RAINCOAT: Dry clean only at a reputable dry cleaning establishment. To preserve the beauty of the buttons, we recommend that the dry cleaner remove the buttons and resew them after processing. Or, have him turn the garment inside out before cleaning. A little lukewarm water and a little mild soap will take out small spots. It is good to renew the water repellency of this coat at a good dry cleaners a few times a year.

CARE OF PILE LINER: Dry clean only. Cold tumble, pile fabric method. Dry clean professionally with any clean organic solvent. Tumble dry at room temperature only — short cycle and minimum extraction. Coin operated machines not recommended. Do not steam or press.



TOPCOAT

The Delta girls in Boston and Chicago will especially love the new winter coat. It's warm 100% wool in an A-line shape with a slenderizing shaped midriff. The collar is small and flattering and can be worn open or closed. Additional styling details are the large patch pockets and the brass button double-breasted treatment.

CARE: Dry clean only at a reputable dry cleaning establishment. Have the cleaner turn coat inside out before processing to preserve the beauty of the buttons, or he can remove all buttons before cleaning.

SCARF

Your new scarf is washable 100% polyester with a print especially designed for Delta and printed in the exact colors of the uniform.

This 12 x 45" scarf can be worn in the following ways:

1. on the head in windy or cold weather,
2. at the neck as an ascot,
3. tied under the blouse collar in a square knot,
4. in the hair as a headband,
5. on the back of the hair,
6. on the handbag.

CARE: The scarf is easy care 100% polyester. Hand wash only in mild soap and lukewarm water. Remember to rinse well in cool water. This scarf must be laid out flat or hung up to dry after washing. **DO NOT LEAVE ROLLED UP.** Always press with a warm iron only.



S H O E S

Dark navy "Gucci" style shoes (as shown in the sketches) in vinyl or leather are suggested. These look good with skirts or pants because of the tongue which covers the instep.

H O S I E R Y

A natural, nude, or suntan shade is suggested.

B O O T S

Dark navy smooth fitting vinyl or leather boots (as shown) are suggested. A non-slip or ridged sole is desirable.

They should only be worn with the pants or the coats. Boots cannot be worn with the skirts alone on board aircraft.

G L O V E S

Must be dark navy fabric or leather. No shiny vinyl or white gloves may be worn.

The gloves are to be worn only with the coats.

H A N D B A G

Navy dyed-to-match leather with adjustable shoulder strap and inside compartments.

To clean, wipe off with warm water and mild soap. Dry thoroughly.